



ZHEJIANG HANGCHA IMP. & EXP. CO., LTD.

Factory site: 666 Xiangfu Road,
Hangzhou, Zhejiang, China (311305)

Tel: +86-571-88926735 88926755
Fax: +86-571-88926789 88132890

sales@hcforklift.com
www.hcforklift.com



Follow us on
Facebook



Follow us on
YouTube



Follow us on
WeChat



Download "Hangcha
Forklift" App



ISO14001
ISO14001:2015



ISO9001
ISO9001:2015



HANGCHA trucks conform
to the European Safety
Requirements.

2022 VERSION 4/COPYRIGHT 2022/04

HANGCHA GROUP CO., LTD. reserves the right to make any changes without notice concerning colors, equipment, or specifications detailed in this brochure, or to discontinue individual models. The colors of trucks, delivered may differ slightly from those in brochures.

X Series IC Forklift Truck For Work In Stone Industry

with capacities of 5,500kg



The World of Hangcha
SINCE 1956



X Series IC Forklift Truck For Work In Stone Industry

The X series 5t stone forklift, based on the X series, retains the existing highlights of the X series. By adoption of a differentiated competitive strategy according to the characteristics of the stone market working conditions, it improves product performance in terms of load capacity, reliability, heat dissipation capacity, braking capacity, dust and water resistance, surpassing competing products.

Model Number	Rated lifting capacity	Load center distance	Engine Model/Power/Torque	Remark
CPCD55-XXG73BN-S	5500kg	500mm	4D32RG30-001-005 60kW/2200r/min 320N·m/1500~1700r/min	New products
CPCD55-XXG76BN-S			YC4DK75-T303 55kW/2200r/min 315N·m/1400~1700r/min	

Product Highlights

Stable and reliable braking

- / Wet braking, maintenance-free
- / Good braking of the axle housing

Strong impact resistance

- / Enhanced mast
- / Enhanced frame
- / More stable tilt cylinder

Heavy-duty operating conditions

Strong adaptability

- / 5.5T rated load
- / High-pressure common-rail engine
- / Okamura floating hydraulic transmission
- / Single-pump unloading multi-way valve

Novel and stylish appearance

- / A continuation of the X Series appearance features

Energy saving and high efficiency

- / High-pressure system, two pumps converging

Better comfort

- / Floating hydraulic transmission, big surrounded chair, simple and convenient for operations and pick-up

Good resistance to dust and sand

- / Double paper air filter, protective board of heat dissipater
- / High-mounted breather, steering cylinder jacket, tilt cylinder jacket





Stable and reliable braking

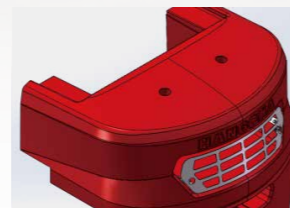
- / Highly load-bearing and fully enclosed wet brake drive axle, isolated from sand, oil stains and other harsh environmental influences, realizing high reliability, stable braking, maintenance free and semi-permanent life.
- / The axle housing with a safety bearing factor of 3.7 times exhibits high bearing capacity.



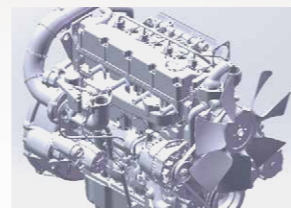
Wet braking drive axle

Strong adaptability to heavy-duty operating conditions

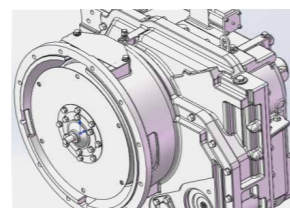
- / 5.5T rated load, 2100mm wheel base, showing large load capacity and excellent stability.
- / 315N·m high torque and high-pressure common-rail engine, displaying strong explosive power.
- / Okamura floating hydraulic transmission exhibiting outstanding performance and better adaptability to high-intensity operating conditions.
- / The single-pump unloading multi-way valve is applied to show high-efficiency and energy-saving performance, and low hydraulic oil temperature, greatly improving the hydraulic system reliability and prolonging the service life.



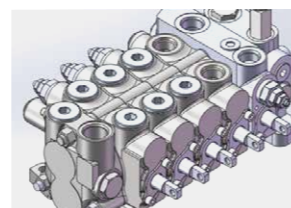
Counterweight



High-pressure common-rail engine



Okamura transmission



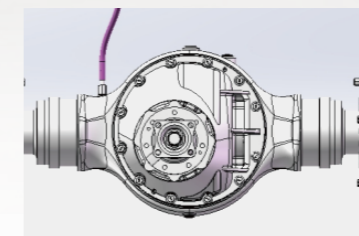
Multiway valve

Good resistance to dust and sand

- / Fully enclosed wet brake, high-mounted drive axle breather, steering cylinder jacket, tilt cylinder jacket, double paper air filter, protective board of heat dissipater, waterproof connector and other parts can reduce or isolate the influence of harsh environment such as sand, oil stain and dust, which can perfectly adapt to the harsh environment such as dust and sand.



Wet brake



Breather



Waterproof connector



Piston rod sleeve



Double paper air filters



Protective board of heat dissipater

Strong Impact Resistance

/ By using special reinforced side rollers, The bearing capacity of mast roller is increased by 30%, reinforced plates are added to the upper/lower beams of the outer mast, the rear end of the channel steel and the tilt cylinder seat to four groups to improve the overall strength of the mast and increase the impact resistance.



Mast assembly

/ Two reinforcement bars and arc flitch plates are added to the opposite side of the cylinder support, the front and rear lower cross members of the frame are widened and the cambered plate is welded to the steering axle mounting plate and the lower beam to strengthen the key impact bearing position.



Frame



Tilt cylinder piston rod adopts 5-7t



Special bolt

Better comfort

/ The floating hydraulic transmission has low vibration, the big surrounded chair is comfortable to sit, the wet brake and electric steering are easy to operate, the mast tilting angle is 9°/9°, thus it is more convenient to fork and pick up goods in the stone market.



Big surrounded chair

Energy saving and high efficiency

/ High-pressure system, multi-way valve steering priority, single-pump unloading, two pumps converging and other technologies, high efficiency and energy saving, low oil temperature, easy to operate.



High-pressure system, two pumps converging

Options

- / Cab
- / Heater
- / Air condition
- / Solid tyre
- / Suspension seat
- / Warning light
- / Fire extinguisher
- / Rear working light





HANGCHA

55

HANGCHA